



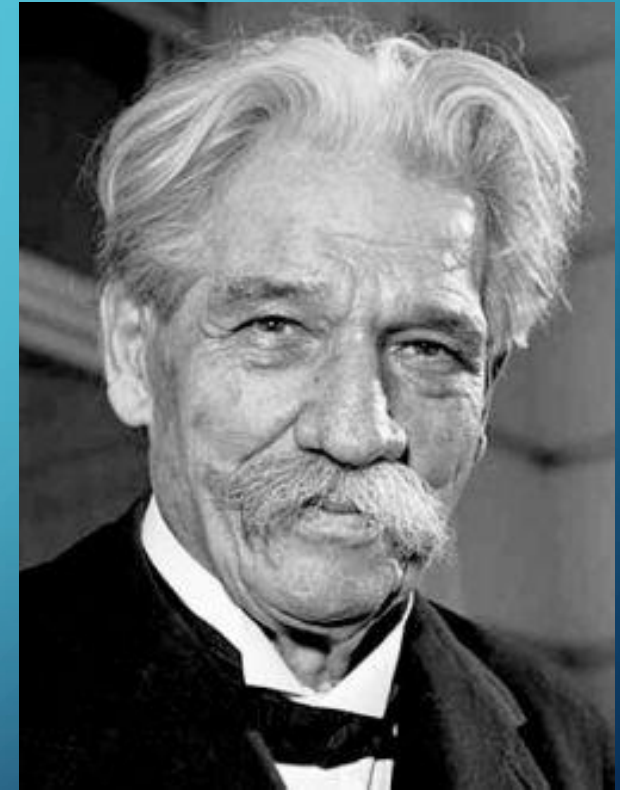
# INVISIBLE COLLEGE OF PACIFISMOLOGY

## SHORT BIOGRAPHY AND BRIEF CONSCIENTIOMETRIC ANALYSIS OF ALBERT SCHWEITZER

RESEARCHER: ANNE-CATRIN, MARCH 11TH, 2018

# SHORT BIOGRAPHY

ALBERT SCHWEITZER WAS A GERMAN BORN  
FRENCH THEOLOGIAN, ORGANIST,  
PHILOSOPHER, PHYSICIAN, MISSIONNAIRE AND  
PEACEKEEPER.



Albert Schweitzer  
1875 - 1965



# STRASBOURG / ALSACE

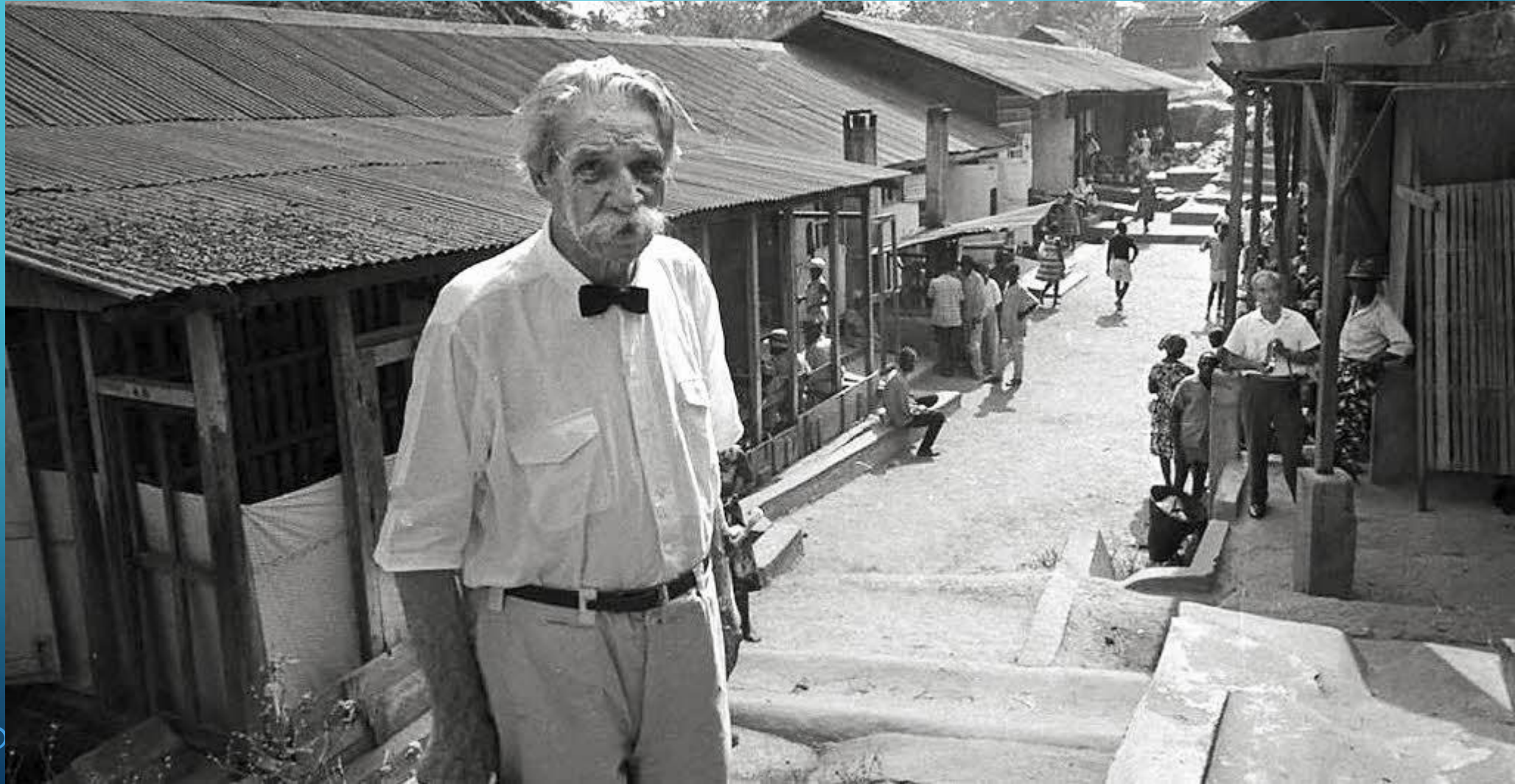


*Pendant plus de 50 ans des bénévoles vont se relayer, à Strasbourg, partout en Europe et dans le monde, pour expédier des milliers de caisses de matériel à Lanbàrené. (ci-dessus)*

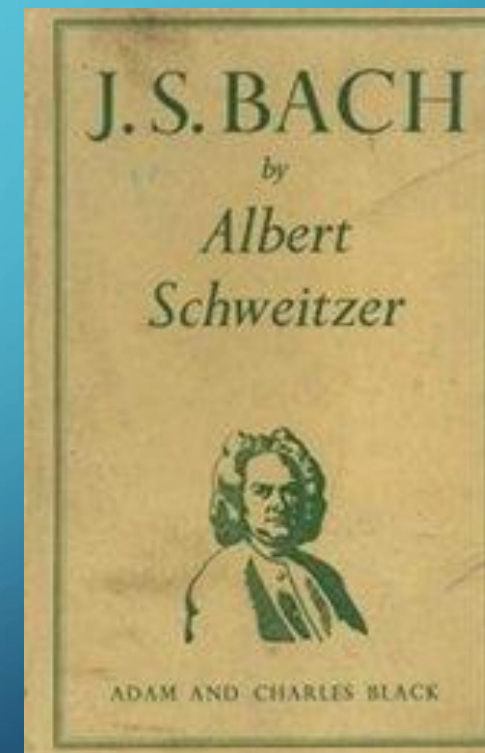
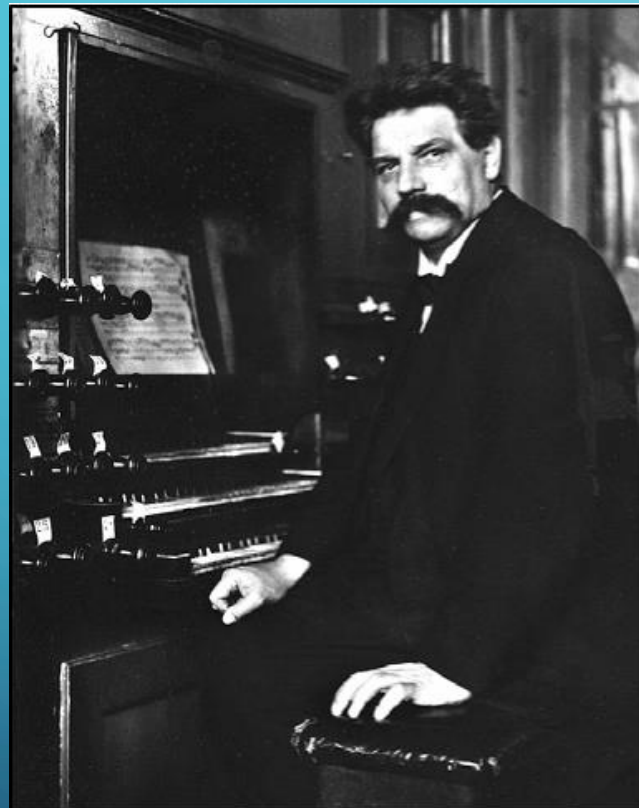
*Arrivée et déchargement de colis en provenance d'Europe. (ci-contre)*



HE FOUNDED THE ALBERT SCHWEITZER HOSPITAL IN LAMBARENE, NOW IN GABON, (THEN FRENCH EQUATORIAL AFRICA).



A. SCHWEITZER IS ALSO KNOWN AS A MUSIC SCHOLAR AND ORGANIST WHO WAS A PROFOUND SCHOLAR OF THE MUSIC OF GERMAN COMPOSER JOHANN SEBASTIAN BACH.





THE NOBEL PEACE PRIZE 1952 WAS  
AWARDED TO ALBERT SCHWEITZER

[HTTPS://TV.NRK.NO/SERIE/FILMAVISEN/FMAA54004554/11-11-1954#T=3M9S](https://tv.nrk.no/serie/filmavisen/fmaa54004554/11-11-1954#t=3m9s)

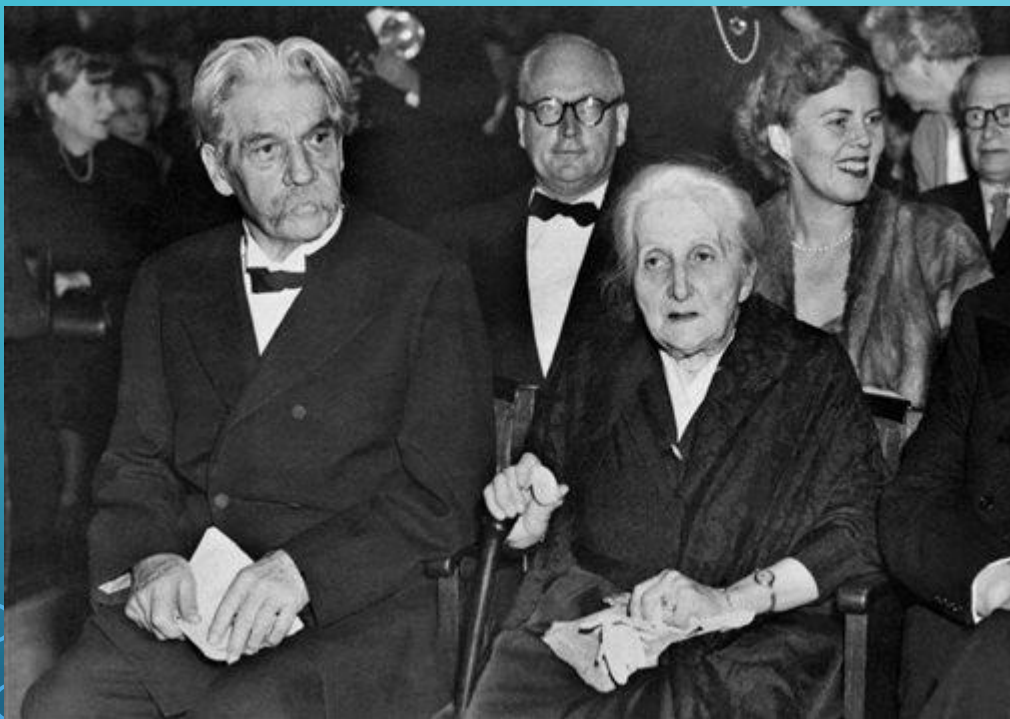


ALBERT SCHWEITZER  
PHILOSOPHY:  
“REVERENCE FOR LIFE”

“I AM LIFE THAT WILLS TO LIVE IN THE  
MIDST OF LIFE THAT WILLS TO LIVE.”

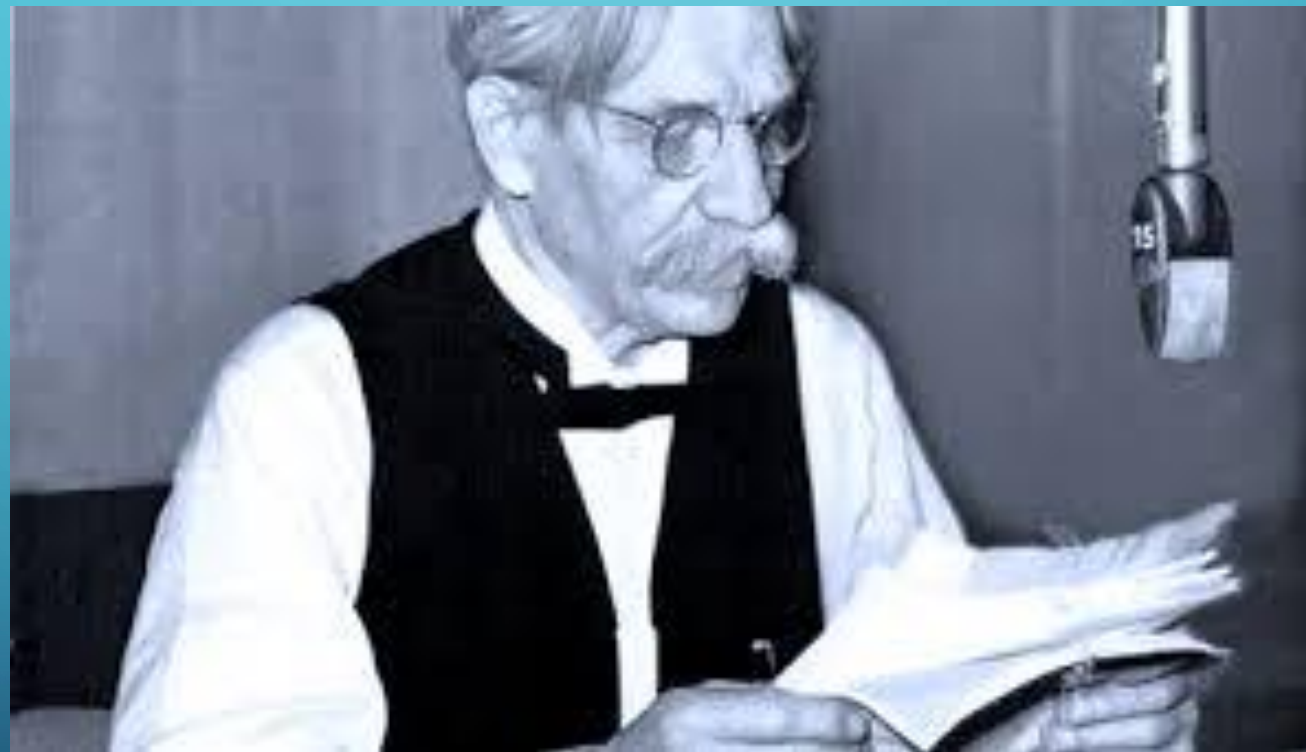


# FAMILY LIFE, HELENE BRESLAU





# PEACEKEEPER - 1957



# DAG HAMMARSKJÖLD

(DURING HIS RADIO SPEECH “THIS I BELIEVE”) IN 1953:



“The two ideals, which marked my world as a child are in total harmony and adapted to the demands of this current world, are reflected in the ethics of Albert Schweitzer.”

(translation from German to English - Anne-Catrin)



# CONSCIENTIOMETRIC ANALYSIS

Conscientiogram: Soma

Evaluation Sheet Number 1:

Intrasomaticity

(Intraphysical Consciousness and Soma)

Question:

20. An intraphysical consciousness that Always employs the soma correctly, with cosmoethics, in intraphysical life.





# CONSCIENTIOMETRIC ANALYSIS

Conscientiogram: Soma

Evaluation Sheet Number 2: Hereditariness  
(Paragenetics and Genetics)

Question:

39. What is the extent of your probable recent inermisive course according to your innate ideas and lucid self-retrocognitions: frankly remembered or wholly unconscious?



# CONSCIENTIOMETRIC ANALYSIS

Conscientiogram: Soma

Evaluation Sheet Number 3: Minoritiness  
(Child-Intraphysical-consciousness)

Question:

54. How do you classify your consciential  
basement: was it an enriching, insipid or tramatic  
infantile period?



# CONSCIENTIOMETRIC ANALYSIS

Conscientiogram: Soma

Evaluation Sheet Number 4: Sexuality  
(Intraphysical Consciousness, Soma and Sex)

Question:

77. What are your mature qualities within  
maternity / paternity and the implications of this  
in your healthy sexual life?



# CONSCIENTIOMETRIC ANALYSIS

Conscientiogram: Soma

Evaluation Sheet Number 5: Youth  
(Young-Intraphysical-Consciousness)

Questions:

96. What are your personal lack of reflections, the hierarchy of your existential interest, your preferences and your choices?

100: An intraphysical consciousness who seriously applied himself to a well-adjusted youth as a preparation for his own existential program?



# CONSCIENTIOMETRIC ANALYSIS

Conscientiogram: Soma

Evaluation Sheet Number 6: Psychomotricity  
(Neurons and Muscle Mass)

Question:

106. What is the level of your global equilibrium, experiencing with your head, your ideas, your energies, your biceps and the Subcerebral aggressiveness?



# CONSCIENTIOMETRIC ANALYSIS

Conscientiogram: Soma

Evaluation Sheet Number 7: Scholasticity  
(Personal Curriculum)

Question:

137. What have been your choices with regard to the courses taken and given, diplomas, works, titles and prizes awarded?





# CONSCIENTIOMETRIC ANALYSIS

Conscientiogram: Soma

Evaluation Sheet Number 8: Kinship

(Intraphysical Consciousness and Family)

Question:

159. What is the evolutionary level of your awareness regarding your family, love, patience, maturity and the fraternal adaptation to the intraphysical society to which you belong?



# CONSCIENTIOMETRIC ANALYSIS

Conscientiogram: Soma

Evaluation Sheet Number 9: Coexistentiality  
(Cosmoethical Links)

Question:

180. An intraphysical consciousness who lives a constructive cosmoethical link without divorce.



# CONSCIENTIOMETRIC ANALYSIS

Conscientiogram: Soma

Evaluation Sheet Number 10: Longevity  
(Old Age)

Question:

198. What is the balance of your holocarmic account in your old age and the presumable level of your upcoming post-desomatic period?

# CONSCIENTIOMETRIC ANALYSIS

Conscientiogram: Bioenergetics

Evaluation Sheet Number 13: Vitality  
(Abdominal Sub-brain)

Question:

254. What is the degree of your unbreakable will, of your discernment and of the practical applications of your umbilicochakra? What is the weight of your subthosenes – the units of measure of the abdominal sub-brain?





# CONSCIENTIOMETRIC ANALYSIS

Conscientiogram: Bioenergetics

Evaluation Sheet Number 16: Sanity

(Homeostasis of the Intrapysical Consciousness)

Question:

317. How do you react to the condition of Homo amicus, the generous intrapysical consciousness, in contrast to Homo hostilis, the intrapysical intruder?



# CONSCIENTIOMETRIC ANALYSIS

Conscientiogram: Bioenergetics

Evaluation Sheet Number 18: Acquisitiveness  
(Self-attachment and Self-detachment)

Question:

355. What is the balance of your human life, simultaneously, within the unavoidable self-attachments and intelligent self-detachments?



# CONSCIENTIOMETRIC ANALYSIS

Conscientiogram: Bioenergetics

Evaluation Sheet Number 19: Detoxicity  
(Energetic Self-compensations)

Question:

380. An intraphysical consciousness who correctly applies energetic and multidimensional para-hygiene to itself.



# CONSCIENTIOMETRIC ANALYSIS

Conscientiogram: Antiemotionality  
Evaluation Sheet Number 21: Anteriority  
(Pre-somatic Consciousness)

Question:

419 (second part). How many hours a week do you think about others with the intention of helping them?





# CONSCIENTIOMETRIC ANALYSIS

Conscientiogram: Antiemotionality

Evaluation Sheet Number 22: Potentiality

(Courage of the Consciousness)

Question:

431. Have you discovered, still during a useful phase in your life, the use of justified audacity in your resolutions?

# CONSCIENTIOMETRIC ANALYSIS

Conscientiogram: Antiemotionality  
Evaluation Sheet Number 25: Utility  
(Intraphysical Consciousness and free time)

Question:

495. What is the extent of your free time, of your leisure hours and the fact that the consciousness needs to come before work? What evolutionary benefits have you been obtaining with the intelligent utilization of your time?



# CONSCIENTIOMETRIC ANALYSIS

Conscientiogram: Antiemotionality  
Evaluation Sheet Number 27: Influentiability  
(Satellite-Intraphysical-Consciousness)

Question:

538. What is your personal autonomy in relation to what the most fanaticizing social clique thinks?



# CONSCIENTIOMETRIC ANALYSIS

Conscientiogram: Antiemotionality

Evaluation Sheet Number 30: Egokarmality  
(Intraphysical Consciousness and egoism)

Question:

598. What is the evolutionary structure of your personal work, your scope, duration and results for this current, critical, human existence?





# CONSCIENTIOMETRIC ANALYSIS

Conscientiogram: Rationality

Evaluation Sheet Number 34: Personality  
(Personal Character)

Question:

670. What is the nature of your individuality  
itself: free or dependent, pacific or hostile,  
balanced or immature?

# CONSCIENTIOMETRIC ANALYSIS

Conscientiogram: Rationality

Evaluation Sheet Number 37: Imperturbability  
(Intraphysical Consciousness and Self-control)

Question:

734. How much have refrainment, mishaps and traumas been Worth to you in order to set your level of internal Anchorage in your condition of intraphysical consciousness? Do you control your consciential energies?

# CONSCIENTIOMETRIC ANALYSIS

Conscientiogram: Rationality

Evaluation Sheet Number 39: Maxiconsensuality  
(Leading-edge Knowledge)

Question:

778. Do you put effort – in any manner – towards intellectuality, encyclopedism, erudition, polymathy and total culture? What is your contribution for the increase of leading-edge relative truths on Earth?

# CONSCIENTIOMETRIC ANALYSIS

Conscientiogram: Leadership

Evaluation Sheet Number 41: Authority  
(Power of Conduction)

Questions:

808 (2. part). How much is your cosmoethical code of conduct worth?

811. How do you coexist with leadership, be it Scientific, religious, entrepreneurial, marginal or of other categories?



# CONSCIENTIOMETRIC ANALYSIS

Conscientiogram: Leadership  
Evaluation Sheet Number 41: Authority  
(Power of Conduction)

Questions:

816. What is the dimension of your militant public spirit when placed under the ephemeral lights on the stage of human life? What is your contribution to the improvement of the exercise of authority on Earth?





# CONSCIENTIOMETRIC ANALYSIS

Conscientiogram: Leadership

Evaluation Sheet Number 41: Authority  
(Power of Conduction)

Questions:

817. What is the intensity of your presence regarding the qualification of personal dynamics in the frank exercise of human authority?

# REFERENCES

WEB:

PICTURES ALBERT SCHWEITZER: GOOGLE IMAGES

WIKIPEDIA

BIBLIOGRAPHY FOR THE BIOGRAPHY:

ALBERT SCHWEITZER, SELBSTZEUGNISSE

ALBERT SCHWEITZERS MISSION – HEALING AND PEACE, COUSINS

ALBERT SCHWEITZER BAUT LAMBARENE, DIE BLAUEN BÜCHER

DAG HAMMARSKJÖLD – VISION EINER MENSCHHEITSETHIK

MAGAZINE DNA-LES SAISONS D'ALSACE – ALBERT SCHWEITZER, FEB 2013

CONSCIENTIOLOGICAL BIOGRAPHY:

CONSCIENTIOGRAM, WALDO VIEIRA, PORT. 1996 / ENGLISH 2012